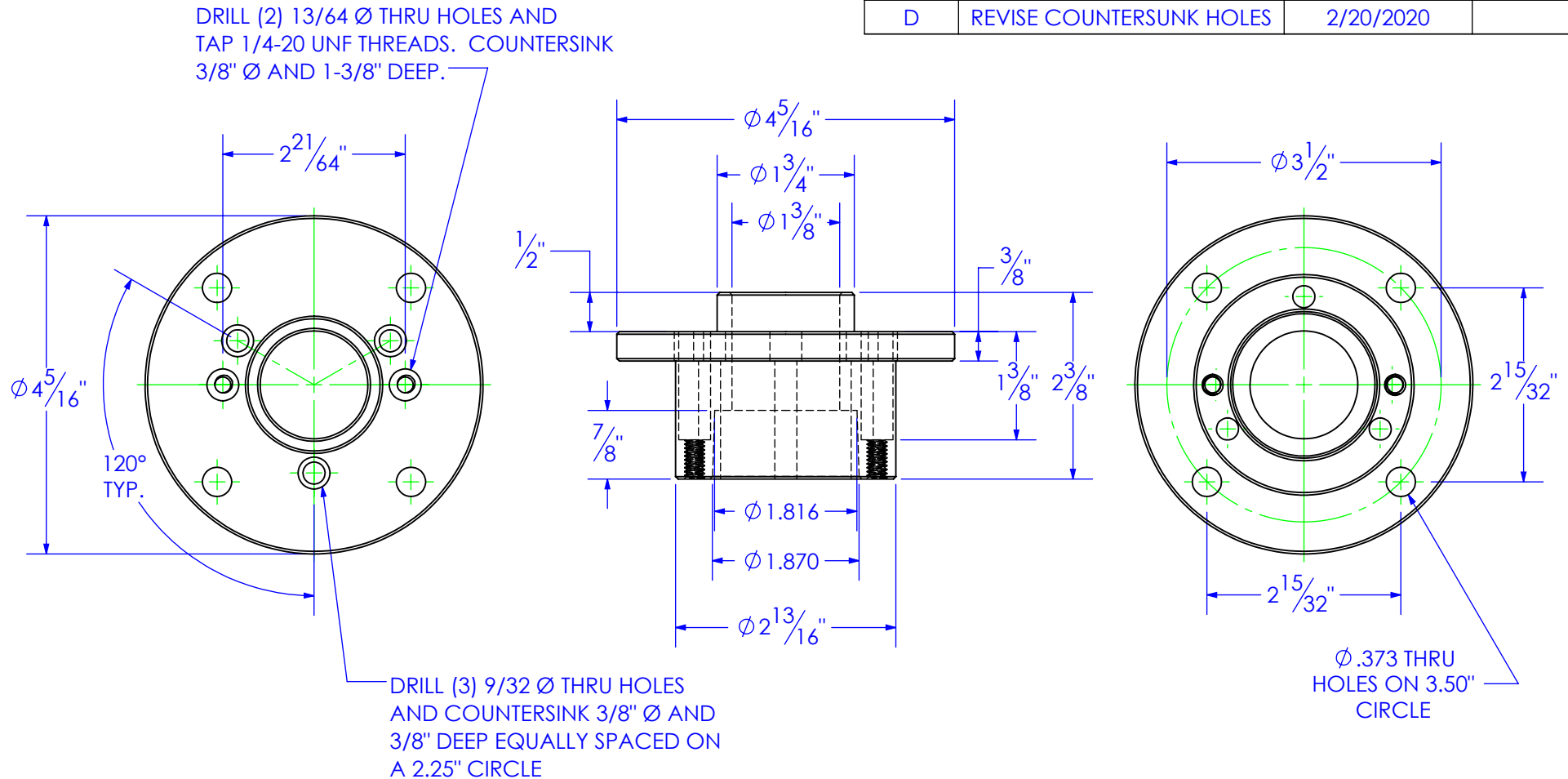


PART NUMBER	DESCRIPTION	MATERIAL
FP-HF8-QDWH	WHEEL HUB, QD TAPERED, HYDRA FIGURE 8	6061 Aluminum

REVISIONS			
REV.	DESCRIPTION	DATE	APPROVED
A	INITIAL RELEASE	10/23/2019	
B	REVISE .417 HOLE SPACING	1/13/2020	
C	REVISE .417 HOLES TO .373	1/30/2020	
D	REVISE COUNTERSUNK HOLES	2/20/2020	



NOTE:

1. BREAK CORNERS  $\frac{1}{32}$  X  $45^\circ$  (UNLESS OTHERWISE SPECIFIED)


**PROPRIETARY AND CONFIDENTIAL**

THE INFORMATION CONTAINED IN THIS DRAWING IS THE SOLE PROPERTY OF TRIPLE C INC. ANY REPRODUCTION IN PART OR AS A WHOLE WITHOUT THE WRITTEN PERMISSION OF TRIPLE C, INC IS PROHIBITED.

UNLESS OTHERWISE SPECIFIED:  
DIMENSIONS ARE IN INCHES  
TOLERANCES:  
FRACTIONAL  $\pm 1/16$   
ANGULAR: MACH  $\pm 1$  BEND  $\pm$   
TWO PLACE DECIMAL  $\pm .010$   
THREE PLACE DECIMAL  $\pm .005$

MATERIAL 6061 Aluminum

DO NOT SCALE DRAWING

	NAME	DATE	P.O. BOX 248, SABETHA, KS 66534 (785) 284-3674 FAX (785) 284-3931	
DRAWN	ETHAN	2/21/2020		
PART #	FP-HF8-QDWH			
ASM #	Asm #			
COMMENTS:			WHEEL HUB, QD TAPERED, HYDRA FIGURE 8	
SIZE	DWG. NO.	REV		
A	12-2488-6	D		
SCALE: 1:2		WEIGHT: 1.02		SHEET 1 OF 1